




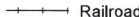



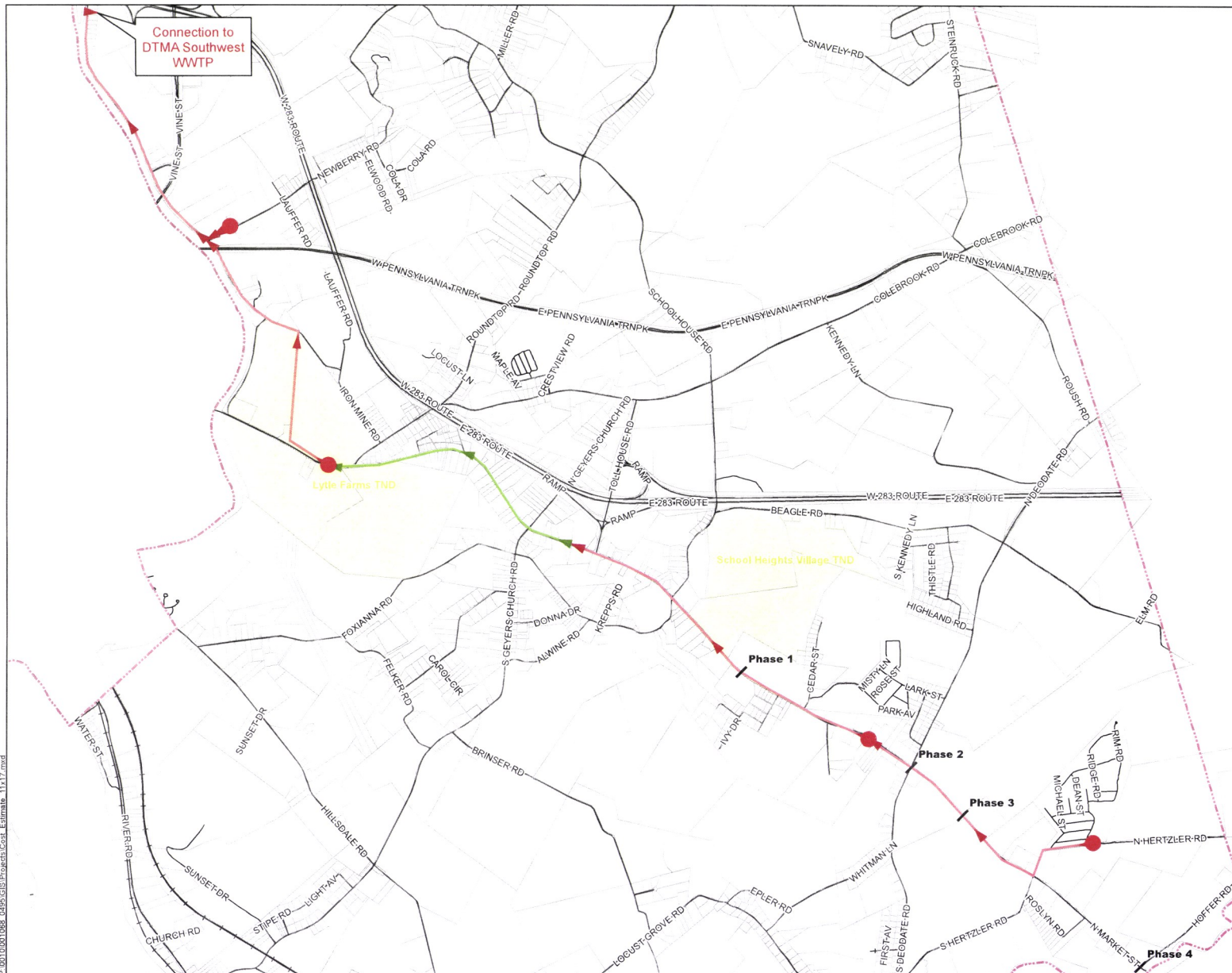


Cost Estimate Exhibit

Londonderry Township Dauphin County, Pennsylvania

-  Cost Estimate Phase
-  Proposed Pump Station
-  Force Main Sewer
-  Gravity Sewer
-  Road
-  Railroad
-  Parcels
-  Waterbody
-  Municipal Boundary



Mapping derived from data provided by Dauphin County.
 10/3/2018 | PM: AMK | GIS: BLS | QA: MDW | R001068.0495

HRG
 Herbert Rowland & Grubic Inc
 Engineering & Related Services
 An Employee-Owned Company

369 East Park Drive
 Harrisburg, PA 17111
 717.564.1121 [phone]
 717.564.1158 [fax]
 www.hrg-inc.com

P:\011021068_0495\GIS\Projects\Cost Estimate_11x17.mxd